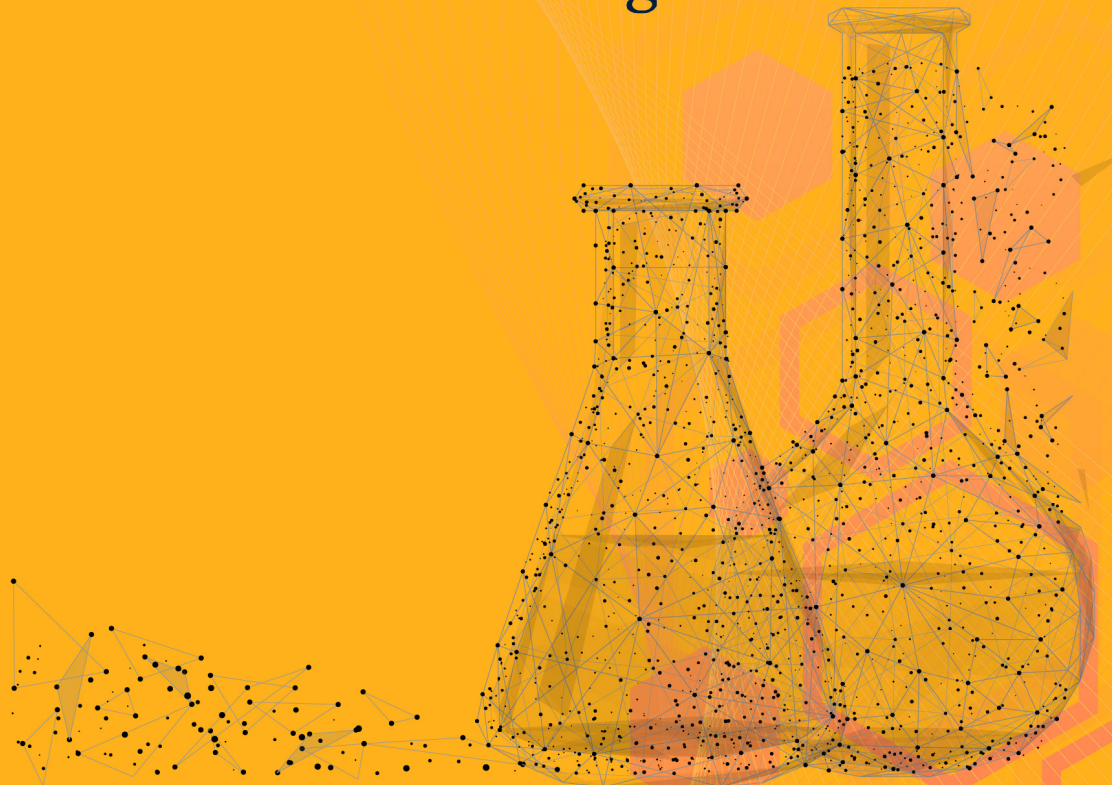


**ICIS
TOP
100
COMPANIES**



The Leela Corporation

—Your Partner in Progress—



About Us

Established as an entity in the year 2015, we “TLC” are a leading Global Chemical Distributor & A Hazardous Waste Management Company, where we deal in wide range of Chemicals, Strong Acids, Basic Chemicals, Inorganic Chemicals, Solvents, APIs, Intermediates, Excipients and Food Colors. Our management service having its base in Ahmedabad (Gujarat, India), with the support of our channel partners, we are able to provide these products in diverse specifications within stipulated time period.

TLC is one of the fastest emerging companies certified by an ISO 9001:2015 & ISO 14001:2015 and manufacturers and exporters of acrylic based specialty Polymers for pharmaceuticals, cosmetics and personal care industry in India, Today TLC is a multi-product group with proven capabilities in design, development, manufacturing and servicing various polymers and related products for all the above-mentioned industries. TLC has been a host to provide solutions to industry’s specific problems and needs. We are proud to be in top 100 Companies by ICIS, and looking forward to skywards.

Content

Our Vision & Mission	03
Our Core Values	04
Our Leadership Team	05
Nature of Business	07
Legal Support & Working	08
Glimpse of Products - India	09
Glimpse of Products - International	13
Our Clientele	19
Sectors Served	21

Our Vision & Mission

VISION

To be a leading, sustainable, customer-centric Chemicals Company globally by providing world-class products & integrated services based on changing market needs.

MISSION

To provide world-class products & exceptional service to customers with sustainable, cost-efficient, highest quality chemicals.

To create a working environment which provides continuous learning, job satisfaction, respect & growth opportunities for our employees across the globe.

To diversify the Company's product and service offering to meet regional and international market demands.

Our Core Values



ACCOUNTABILITY

We are wise and experienced but take responsibility for any errors or changes required in our process. Through continuous improvement and accountability, we are constantly striving to advance each day.



CUSTOMER CENTRICITY

At the heart of our philosophy, customer centricity drives our chemical company to relentlessly prioritize and exceed customer expectations, fostering lasting partnerships through personalized solutions, innovation, and exceptional service.



ENVIRONMENT & SOCIETY

Committed to environmental stewardship and societal well-being, we prioritize sustainability and community engagement in all aspects of our operations.



INTEGRITY

Integrity is our core value, guiding every facet of our chemical company's operations to ensure the highest standards of ethics, transparency, and environmental responsibility in the production of top-quality chemical solutions.



QUALITY

Quality is our hallmark, driving excellence in every facet of our operations. From meticulous processes to rigorous standards, we are dedicated to delivering products that meet and exceed expectations, ensuring customer satisfaction and trust.



TEAMWORK

Internally we always work together to meet our common goals. This partnership expands beyond our corporate walls and includes our customers becoming part of our team. We strive to structure every business relationship as a win-win.

Our Managing Director

Our greatest asset is not just the numbers, but the incredible people who bring passion and dedication to our shared vision. In this journey of success, I don't have just employees, but 'MY PEOPLE'



Ujas Patel
Managing Director
IIM Ahmedabad -
Leadership Skills

Meet Our SBU Directors



Nishant Shah
Director - India Business



Abhishek Panchal
Director - International Business



Rajesh Patel
Director - Finance

Meet Our Leaders



Dr. Sheetal Badshah
Leadership Coach
PhD in Leadership
Certified Leadership Coach
by IIM Bangalore



Hiren Karnani
Fractional COO



Venugopal Pillai
General Manager

NATURE OF BUSINESS

India Business	International Business
Hazardous Waste Management	Exporter
Consulting	Importer
Material Handling	OEM
Transportation	Global Distributor
Counseling	
Legal Advisor	
Legal Documentation	
Monitoring	

Customer Centric Approach

The Leela Corporation marketing policy is to directly reach to customers, support them with technical and legal formalities and help up to standardization of the end use in Hazardous Waste Management business. Marketing team comprises of well experienced persons with appropriate technical skills and knowledge of Hazardous Waste Trans-boundary Movement Rules-2016.

The Leela Corporation has always believed in exceeding customer expectations on quality, performance, and service. This has been achieved through teamwork and continuous learning and improvement.

Make the most out of extra, leftover or unwanted materials.

Legal Support & Working Pattern In Hazardous Waste Management

PROCESS FLOW

Taking Samples of HW from a Generator and doing analysis by NABL/ISO Certified Laboratory.

Submitting Facilitator Legal Documents to the Generator Company.

MOU creation between Generator and Facilitator.

Vehicle Placement as per schedule with an AIS140-GPS enabled system.

An AIS140-GPS credentials will be handed for tracking.

Each and every load will be loaded under manifest compliance only.

If Generator and Facilitator are located in Gujarat, then manifest acceptance would be done both online and offline. Manifest Copy will be duly signed and handed to the Generator after unloading.

If the Facilitator is located outside of Gujarat, then they would be registered under XGN portal of GPCB. Manifest would be accepted both online and offline. Manifest Copy will be duly signed and will be handed to the Generator after unloading.



Our Products

INDIA BUSINESS



Liquid

- Dilute Sulphuric Acid 15% to 95%
- Dilute Hydrochloric Acid 28% to 35%
- Dilute Acetic Acid 10% to 98%
- Dilute Phosphoric Acid 20% to 60%
- Poly Aluminium Chloride
- Chemical Residue
- Calcium Chloride Solution
- Distillation Residue
- Liquor Ammonia Solution
- Paint Waste
- High CV Liquid Waste
- Poly Aluminium Chloride
- Chemical Residue
- Calcium Chloride Solution

Solid / Semi-Solid

- Chemical Residue
- Paper Waste
- ETP Sludge
- Spent Catalyst
- Spent Carbon
- Iron Sludge
- FRP Waste
- Chemical Gypsum
- Carbon Black
- Resin Waste
- Cotton Waste
- Glass Wool Waste
- Mix Solid Waste
- Calcium Chloride
- Oily Sludge
- Alumina Powder

Inorganic Chemicals

- Ammonium Sulphate
- Potassium Sulphate
- Magnesium Sulphate
- Zinc Sulphate
- Sodium Meta Bisulphate
- Potassium Nitrate
- Ferrous Sulphate
- Ammonium Bicarbonate
- Barium Carbonate
- Sodium Metabisulphite
- Sodium Sulphate
- Sodium Bi Sulphate
- Potassium Chloride
- Calcium Chloride
- Magnesium Chloride
- Poly Aluminium Chloride
- Sodium Sulphite Flakes
- Sodium Nitrate
- Sodium Tripolyphosphate
- Potassium Schoenite

Strong Acids & Basic Chemicals

- Hydrochloric Acid
- Sulphuric Acid
- Acetic Acid
- Nitric Acid
- Phosphoric Acid
- Ferric Chloride Liquid
- Sodium Silicate
- Caustic Soda Lye
- Caustic Soda Flakes
- Hydrogen Peroxide
- Soda Ash Light
- Liquor Ammonia

Spent Solvent

- Mix Solvent
- Ethanol
- Methanol
- Acetone
- Toluene
- Hexene
- Xylene
- Benzene
- MDC
- EDC

List of Banned Items

The Leela Corporation is not working on the following items that are listed as banned items for Preprocessing, Co-processing, Incineration, Reuse, Reduce and Recycle.

- Anatomical Hospital Wastes (Bio-medical waste)
- Asbestos-containing Wastes
- Bio-hazardous Wastes
- Electronic Scrap
- Entire Batteries
- High-concentration Cyanide Wastes
- Mineral Acids
- Radioactive Wastes
- Unsorted Municipal Garbage
- Explosives



Our Products

INTERNATIONAL BUSINESS



Strong Acids

- Hydrochloric Acid 33% or 35%
- Sulphuric Acid 98%
- Nitric Acid 61%, 68%, 72%
- Glacial Acetic Acid 99.9% (Technical or Food)
- Phosphoric Acid 85% (Technical or Food)
- Formic Acid

Cosmetic & Personal Care Pharmaceutical

- LEEPOL® Carbomer (Acrylic Co-Polymer)
- LEEPOL® HCO (Hydrogenated Castor Oil)
- LEEPOL® Coats (Methacrylic Co-Polymer)
- Glycerin
- Polyethylene Glycol (All Range)
- Polysorbate 20/60/80
- Sodium Gluconate
- Xanthan Gum (Food or Pharma)
- Butylated Hydroxyanisole (BHA)
- Butylated Hydroxytoluene (BHT)

Basic Chemicals Soap, Detergent & Laundry

- Soda Ash (Light or Dense)
- Caustic Soda (Flakes/Pearls/LYE-32% or 48%)
- Liquid Ammonia
- Sodium Silicate (Glass/Liquid)
- Sodium Meta Silicate
- Sodium Alumina Silicate
- Hydrogen Peroxide (35% or 50% & 60%)
- Cocamido Propyl Betaine (CAPB)
- Coco-Diethanolamide (CDEA)
- Sodium Lauryl Ether Sulphate (SLES)
- Sodium Lauryl Sulphate (SLS)
- Sodium Monochloro Acetate (SMCA)
- Monochloro Acetic Acid (MCA)
- Tri Chloro Acetic Acid (TCA)
- Linear Alkyl Benzene Sulfonic Acid (LABSA)
- Triethanolamine
- Sulphamic Acid
- Guanidine Carbonate

Water Treatment Chemical

- Ferric Chloride (Liquid/Powder)
- Aluminium Sulphate (Ferric/Non-Ferric)
- Ferric Chloride Anhydrous
- Ferric Chloride Hexahydrate
- Calcium Hypochlorite (Sodium Base) - 65%
- Sodium Hypochlorite
- Sodium Chlorite
- Sodium Chlorate
- Liquid Chlorine
- Poly Aluminium Chloride (Liquid/Powder)
- Polyelectrolytes

Inorganic Chemicals

- Calcium Chloride
- Potassium Chloride
- Sodium Chloride
- Magnesium Chloride
- Ammonium Chloride
- Zinc Chloride
- Ammonium Sulphate
- Zinc Sulphate
- Magnesium Sulphate
- Sodium Aluminium Sulphate
- Potassium Sulphate
- Sodium Sulphate Anhydrous
- Barium Carbonate
- Sodium Metabisulphite
- Sodium Sulfide Flakes
- Ferrous Sulphate
- Ferric Sulphate
- Copper Sulphate Pentahydrate
- Zinc Oxide
- Calcium Oxide
- Nickel Oxide
- Sodium Hydroxide
- Potassium Hydroxide
- Tri Sodium Phosphate
- Magnesium Nitrate
- Potassium Nitrate
- Sodium Nitrate
- Sodium Nitrite
- Sodium Tripolyphosphate
- Sodium Bi Sulphite
- Ammonium Bicarbonate

Other Excipients

- Citric Acid
- Boric Acid
- Benzoic Acid
- Calcium Carbonate (Heavy/Light/PPT/Oyster)
- Di Calcium Phosphate (Food/Pharma/Feed)
- Maize Starch (Technical/Food/Pharma)
- Titanium Dioxide
- Sodium Carbonate
- Sodium Bicarbonate
- Acid Thickener
- Thinner

APIs & Vitamins

- Amlodipine
- Atorvastatin
- Amoxicillin
- Bupropion
- Clonazepam
- Diclofenac Sodium
- Escitalopram
- Fluconazole
- Furosemide
- Itraconazole
- Ivermectin
- Vildagliptin
- Lisinopril
- Levocetirizine Di HCL
- Metoprolol Tartrate
- Metformin
- Paracetamol
- Sertraline HCL
- Tadalafil
- Telmisartan
- Vardenafil
- Vitamin A
- Vitamin D
- Vitamin E
- Vitamin K

Food Colors

Supra Colors	Lake Colors	Blended Colors
Tartrazine	Lake Tartrazine	Egg Yellow
Allura Red	Lake Allura Red	Black CTB
Sunset Yellow	Lake Sunset Yellow	Black NCTB
Carmoisine	Lake Carmoisine	Black 1011
Ponceau - 4R	Lake Ponceau - 4R	Kesari B
Brilliant Blue FCF	Lake Brilliant Blue FCF	Apple Green
Indigo Carmine	Lake Indigo Carmine	Pea Green
Chocolate Brown	Lake Chocolate Brown	Raspberry Red
Quinoline Yellow	Lake Quinoline Yellow	Strawberry Red

OUR CLIENTELE



Sectors Served

- Cement Industries
- Water Treatment Plant
- Fertilizer Industries
- Common Effluent Treatment Plant
- Agro Chemical Industries
- Dye Intermediate Industries
- Animal Feed Industries
- Metal Industries
- Color & Pigment Industries
- Mining Industries
- Textile Industries
- Pharmaceutical Industries
- Dairy Industries
- Paper Industries

OUR BRAND



Polymer Solution



ISO 9001 : 2015 (QMS)
Certified Company



ISO 14001 : 2015 (EMS)
Certified Company

OUR GROUP OF COMPANIES

 The Leela USA LLC <small>—Your Partner in Progress—</small>	 tobias <i>Amines</i> TOBIAS AMINES LIMITED
<p>Global Chemical Distributor at USA</p>	<p>Dye and Intermediate Manufacturing</p>

Get In Touch

The Leela House
Mangalam Nirwana - 2, B/h, Umiya Campus,
Ahmedabad, Guj.(India) 380060

www.leelacorp.com
info@leelacorp.com | +91-97242 16384



The Leela Corporation



The_Leela_Corp



The Leela Corporation



the_leela_corporation



theleelacorporation